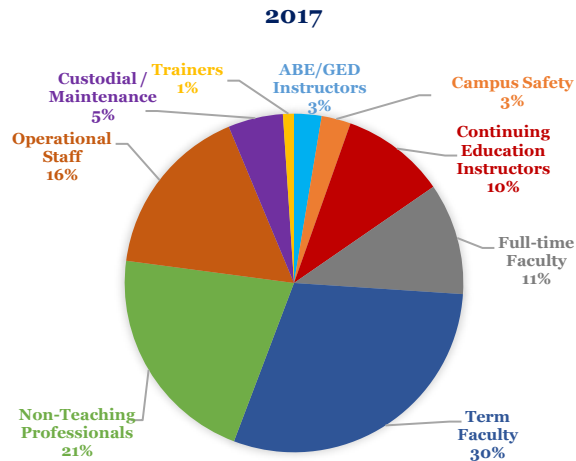


Employees by Job Classification



FY 2018 Budget

The College's FY 2018 budget is nearly \$29.5 million.

Revenues – Operating Funds

Tuition & Fees	43.2%
Local Taxes	23.4%
ICCB Equalization Grants	19.0%
ICCB Base Operating Grants	9.4%
CPPRT	2.2%
All other income	1.9%

Expenditures by Program

Instruction	33.5%
Institutional Support	17.2%
Scholarships, Student Grants & Waivers	12.9%
Operation & Maintenance	11.4%
Student Services	10.2%
Academic Support	7.4%
Public Service	3.2%
Transfers	4.2%

Expenditures by Object

Salaries	59.8%
Employee Benefits	6.4%
Contractual Services	5.9%
Materials and Supplies	4.5%
Utilities	2.7%
Conference & Meeting	1.0%
Contingency	0.7%
Capital Outlay	0.3%
Fixed Charges	0.1%
Other	14.4%
Transfers	4.2%

Programs of Study

- Associate of Arts (1)
- Associate in Arts in Teaching (1)
- Associate in Engineering Science (1)
- Associate in Fine Arts (3)
- Associate in General Studies (1)
- Associate in Science (1)
- Associate in Applied Science (37)
- Certificate of Achievement (21)
- Short-term Certificate of Achievement (12)

Estimated Student Expenses: AY 2017-18

Direct Costs

Tuition	\$3,450.00
Fees	\$316.00
Books and Supplies	\$1,526.00
Total	\$5,292.00

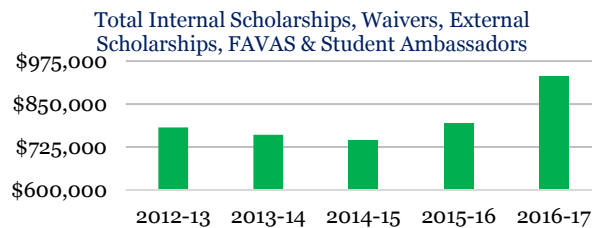
Indirect Costs (Dependent)

Room and Board	\$2,774.00
Transportation	\$3,488.00
Personal Expenses	\$1,622.00
Total	\$7,884.00
Total Direct and Indirect Costs	\$13,176.00

Indirect Costs (Independent)

Room and Board	\$5,528.00
Transportation	\$3,488.00
Personal Expenses	\$1,622.00
Total	\$10,638.00
Total Direct and Indirect Costs	\$15,930.00

John A. Logan College Foundation

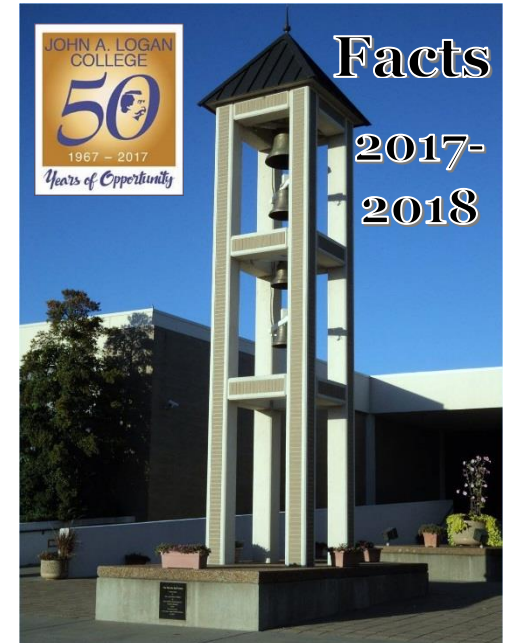


John A. Logan College

700 Logan College Road
 Carterville, IL 62918
 (618) 985-3741
www.jalc.edu



John A. Logan College



Mission Statement

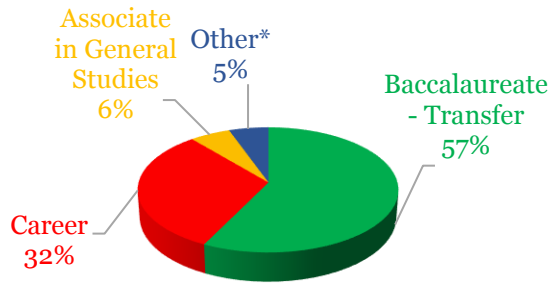
“We are a diverse learning and teaching community committed to improving individual life and society through high-quality, accessible educational programs and engaged learning opportunities.”

JALC Economic Impacts*

- “A 25-year-old John A. Logan College program graduate can expect a total lifetime earnings gain of over \$530,000. This is a 41% increase over the \$1.3 million average total lifetime earnings of those not completing a community college program. These earnings are realized with an average investment of about \$20,000, including foregone earnings while in college. The annual rate of return on this initial investment in a John A. Logan College degree is about 30.3%.”
- “The total economic impact of John A. Logan College on the regional economy in FY 12 was estimated at \$34.6 million and 652 jobs.”

*Source: “John A. Logan College Economic Impacts”

Fall 2017 10th Day Enrollment – 3,933
Breakdown by Area



*Other – Adult Education, Center for Business & Industry, and Continuing Education

Fall 2017 Credit Student Demographics

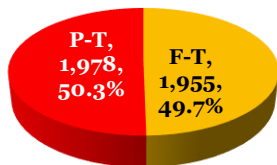
Total Enrollment – 3,933

Gender			
Male	40.8%	Female	59.2%
Age		Average	
17 & Under	16.9%	31-40	24.7%
18-20	36.4%	41-50	7.9%
21-25	20.5%	51-60	4.0%
26-30	9.3%	61 & over	1.9%
			3.1%
Ethnicity			
American Indian / Alaskan Native			0.3%
Asian			1.1%
Black or African American			10.8%
Hispanics of any race			1.9%
Native Hawaiian / Pacific Islander			0.2%
White			77.6%
Unknown			8.0%

Fall 2017 Credit Hour Information

Full-Time Equivalency (FTE) enrollment	2,575
Average number of credit hours enrolled	9.8

Full- vs. Part-time Enrollment



Fall 2017 First-Time to College Students

All First-Time to College	16.2%
Full-Time, First-Time Degree / Certificate-Seeking	11.0%
Part-Time, First-Time Degree / Certificate-Seeking	4.7%

2017 In-District High School Graduates Enrolled at JALC – Fall 2017 Semester

Graduates / Those Enrolled	1,317 / 696 (52.8%)
----------------------------	---------------------

Fall 2017 Distance Education (DE)

Enrolled <u>exclusively</u> in DE courses	10.5%
Enrolled in <u>some</u> but not all DE courses	23.1%
<u>Not enrolled</u> in any DE courses	66.3%

Faculty-to-Student Ratio

Fall 2016 semester	23 to 1
--------------------	---------

Degrees / Certificates Awarded by Level

2016-2017

Associates	453
Certificates of at least 1 but less than 2 years	163
Certificates of less than 1 year	214

Retention, Graduation & Transfer

1-year retention rate for the fall 2015 cohort of first-time students returning the following fall	56%
Graduation rate for the fall 2013 cohort of full-time, first-time degree-seeking students	29%
Transfer-out rate for the fall 2013 cohort of full-time, first-time students who transferred to another institution	23%

Fall 2016 End-of-Semester Enrollments Adult Education, Center for Business & Industry, and Continuing Education

Adult Education	905
Center for Business & Industry	5,023
Continuing Education	9,108

Student Activities

Over 20 student clubs for a variety of interests; student programming including leadership development, social events and guest speakers; service opportunities such as monthly blood drives, voter registration, and the Angel Tree Gift drive; and performances including plays, musicals, and concerts.

Athletics (Member – NJCAA)

One-hundred and two total athletes (87 on scholarship) compete on seven teams in five different sports.

Baseball	Softball
Basketball (Men & Women)	Volleyball
Golf (Men & Women)	

Library Holdings

Physical Collection	51,994
Number of Books	35,039
Magazines and Journals	124
Government Documents	12,778
DVD	673
VHS	3,087
Pro Quest Central E-Books	3,890
Cloud Library E-Books	28,471
Miscellaneous E-Resources	1,099
Streaming Videos – 8 databases - over 20,000 titles.	
Journals, Magazines, Newspaper Articles, Articles from books, Miscellaneous – 30+ databases including thousands of full-text titles.	

Campus

Acreage	169.30
Assigned / Unassigned	67.35 / 101.95
Total number of classrooms / labs	106 / 99

